

FIGURE 1
FRAME

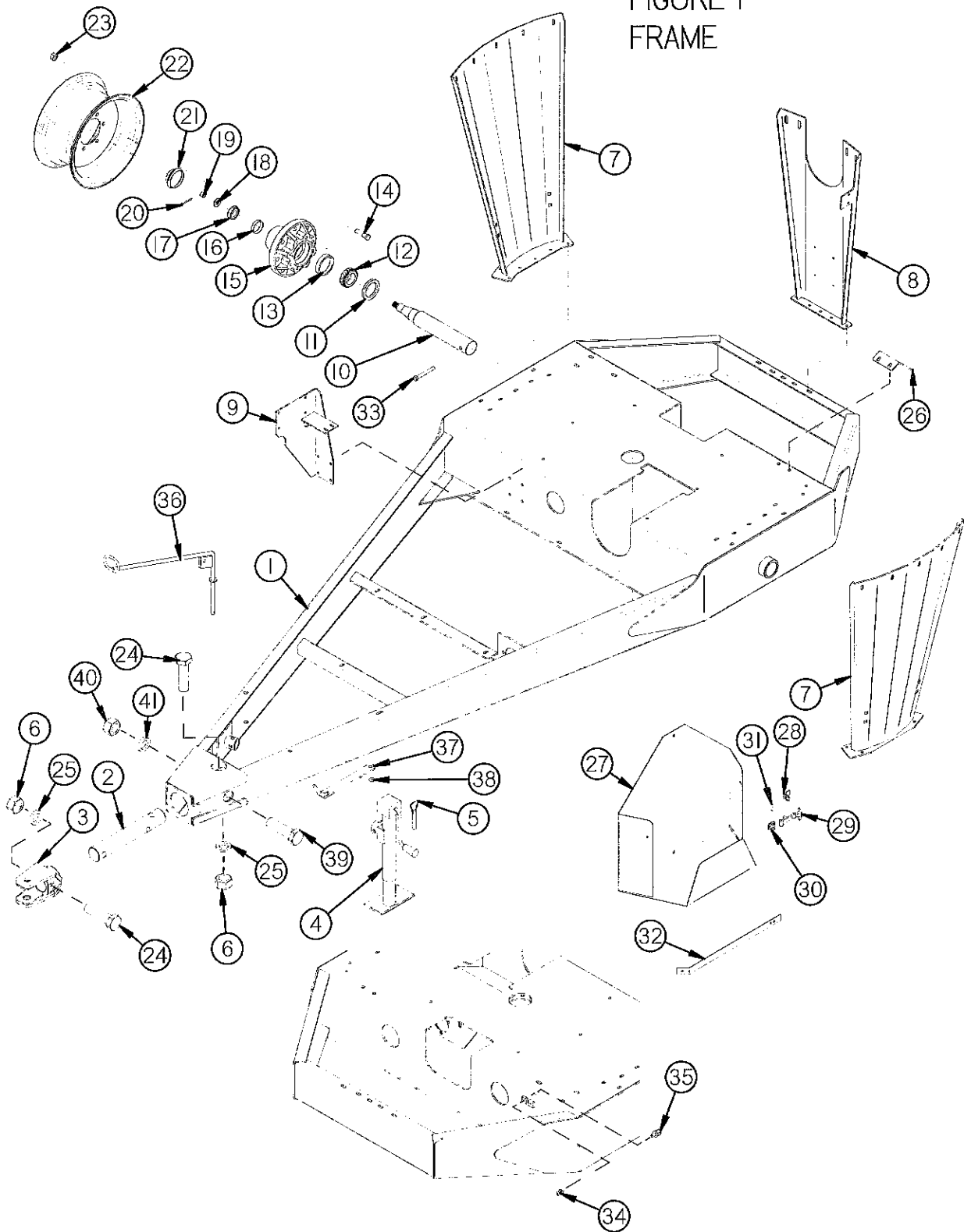


Figure 1 Frame

ITEM #	PART #	DESC.
1	GM72	Frame
2	GM73	Hitch Shaft
3	GM74	Hitch
4	GM396	Jack
5	12N13	Jack Pin & Chain
6	T151	1" Nut
7	GM76	Tank Side Support
8	GM77	Tank Back Support
*	F97	SMV Bracket
9	GM78	Oil Tank Bracket
10	GM79	Spindle
11	B90	Seal
12	B91	Inner Bearing
13	B91A	Inner Race
14	26G5A	Stud 5/8"-18
15	26G4A	Hub (821)
16	B94A	Outer Race
17	B94	Outer Bearing
18	B4	Washer
19	B3	Nut
20	B31	Cotter Pin
21	B2	Hub Cap
22	RG73	Wheel (W-51350)
*	GM394	Tire (15 X 12.5L 20 Ply)
23	26G6A	Lug Nut 5/8"-18
24	GM80	1" x 5" GR 5 Bolt
25	DWM171	1" Lock Washer
26	GM397	Flow Control Bracket
27	GM398	Screen Holder
28	X193	Latch Keeper
29	X192	Rubber Latch
30	X194	Latch Mounting Bracket
31	X195	Latch Pin
32	GM399	Screen Holder Strap
33	B10	1/2" x 4" GR. 5 Bolt
34	G89	Grease Zerk (#1641)
35	GM424	1/4"-28 Grease Line Adapter
36	GM440	Grinder Hose Holder
37	42N2	PTO Holder
38	42N3	Spring (MB1000-035)
39	GM183	3/4" X 4-1/2" GR 5 Bolt
40	GM417	3/4"-10 Nut
41	RG199	3/4" Lock Washer

FIGURE 2
CONCENTRATE HOPPER COLLECTOR

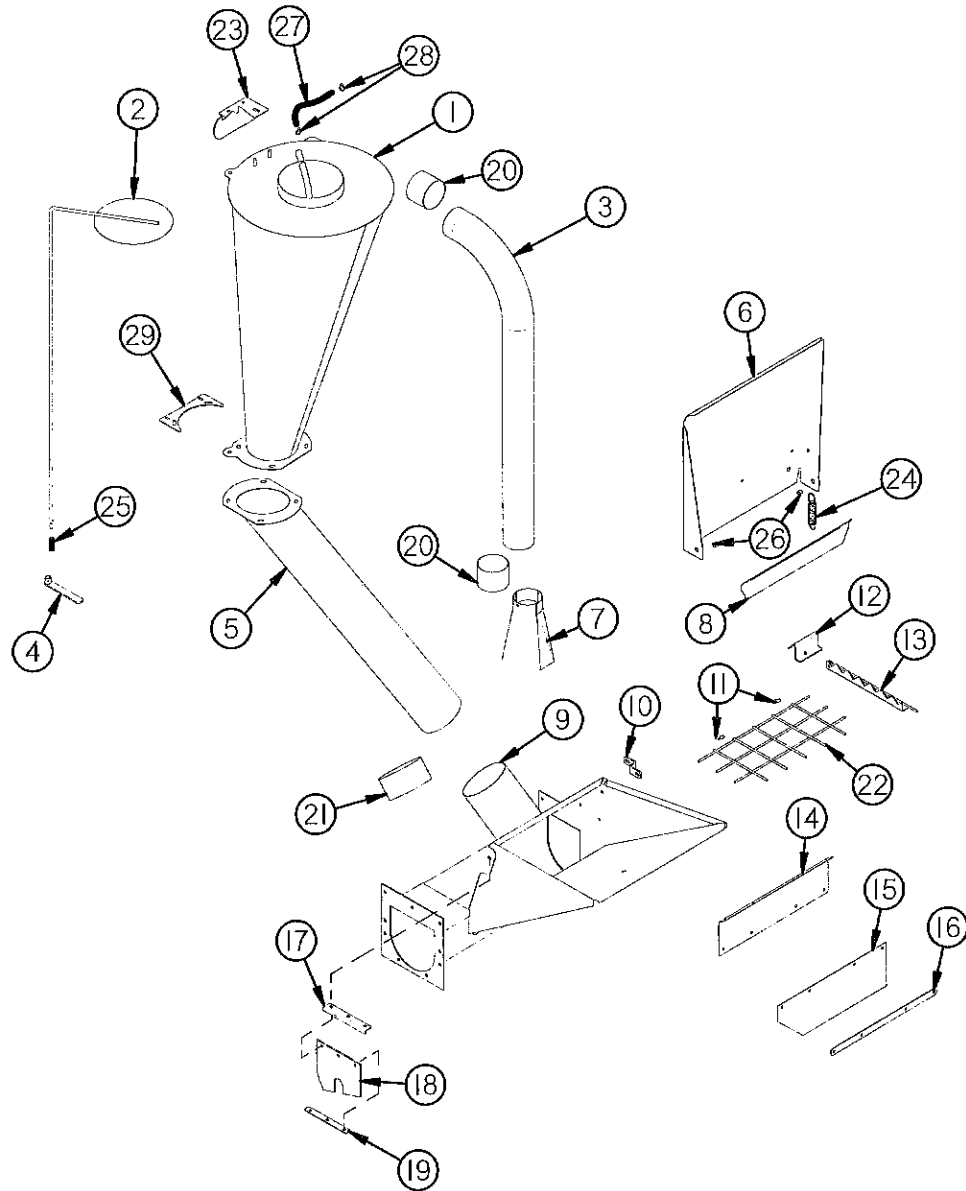


Figure 2 Concentrate Hopper Collector

ITEM #	PART #	DESC.
1	GM81	Dust Collector
2	GM82	Dust Collector Cover
3	GM83	Blower Pipe
4	GM84	Cover Handle
5	GM85	Dust Collector Pipe
6	GM86	Cover Hopper
*	GM420	Cover Seal
7	GM87	Blower Transition Chute
8	GM88	Stop Cover
9	GM89	Supplement Hopper
10	GM90	Retainer Guard
11	GM91	Hose Clamp
12	GM92	Support Breaker
13	GM93	Breaker Bar
14	GM94	Dust Shield
15	GM95	Dust Flap
16	GM96	Dust Flap Retainer
17	GM97	Baffle Stop
18	GM98	Baffle
19	GM99	Baffle Clamp
20	GM100	Blower Pipe Seal
21	GM101	Dust Collector Seal
22	GM360	Hopper Grate
23	GM368	Adjustable Mount Plate
24	K103	Spring (SP10)
25	17G128	Spring
26	GM443	Supplement Hopper Door Pivot
27	GM452	3/4" x 14" Hose
28	GM453	1" Hose Clamp
29	GM460	Adjustable Support Bottom

FIGURE 3
DRIVE LINE

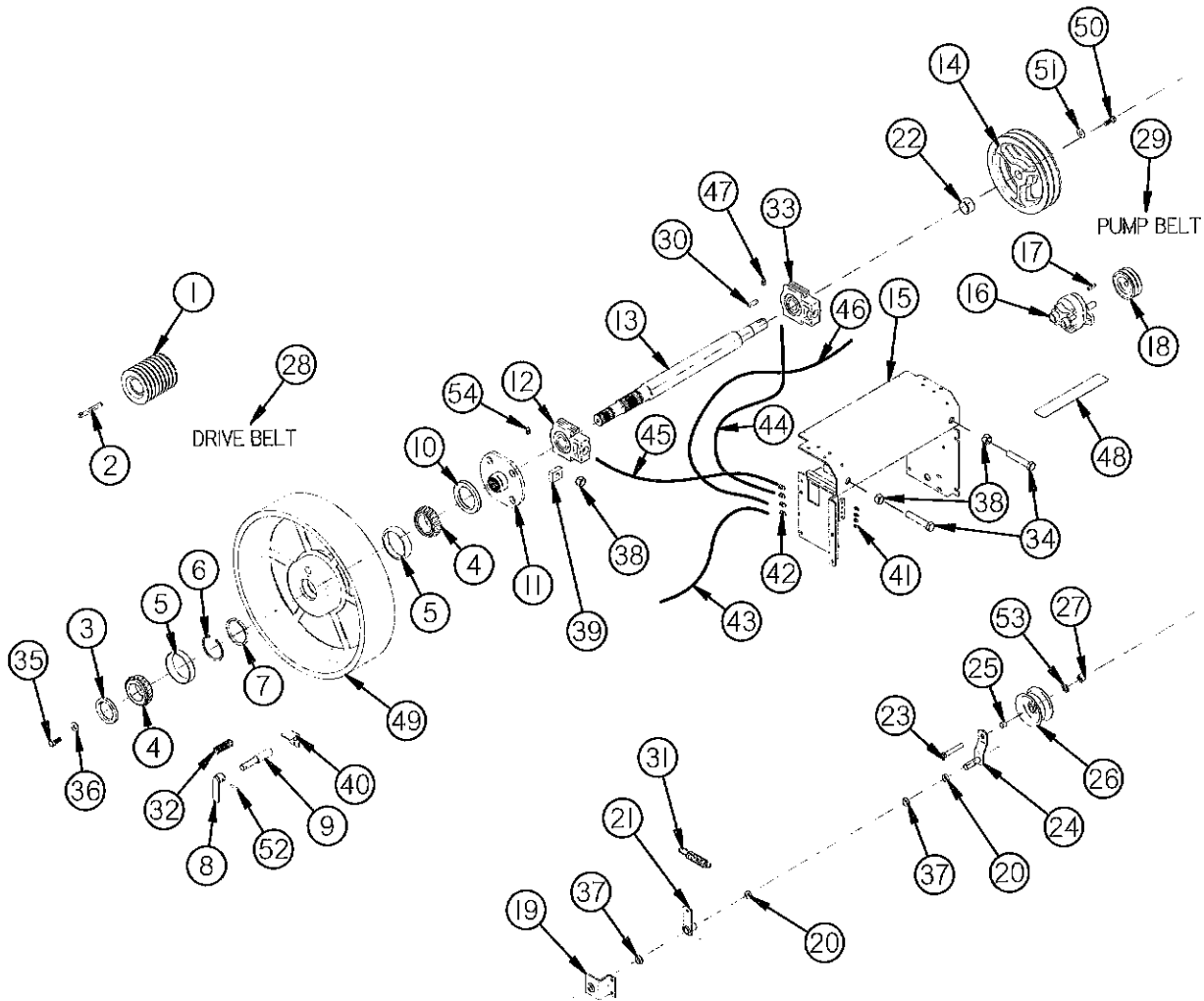


Figure 3 DriveLine

ITEM #	PART #	DESC.	ITEM #	PART #	DESC.
1	GM102	Mill Sheave 540 RPM	42	GM424	1/4-28 Grease Line Adapter
*	GM103	Mill Sheave 1000 RPM	43	GM425	Grease Line 61"
2	GM104	Key 3/8" Taper	44	GM426	Grease Line 30"
3	GM105	Seal (22338)	45	GM427	Grease Line 20"
4	GM106	Outer Bearing (LM501349)	46	GM428	Grease Line 85"
5	GM107	Race (LM501310)	47	GM429	1/4-28 90° Adapter
6	GM108	Snap Ring	48	GM435	Safety Tread
7	GM109	Spacer	49	GM41	Flywheel
8	GM110	Clutch Handle	50	GM456	1/2"-20 x 1-1/4" GR 5 Bolt
9	GM111	Clutch Pin	51	GM124	540 Sheave Washer
10	GM112	Seal (22430)	52	GM40	1/4" x 1-1/4" Expansion Pin
11	GM113	Flywheel Clutch	53	T69	5/8" Lock Washer
12	GM114	Bearing (UCT-210-31 11/16)	54	GM419	1/8" Grease Line Adapter (244054)
13	GM115	Main Drive Shaft			
14	GM116	Pump Drive Sheave (540 RPM) 2AK124			
*	GM276	Taper Lock Hub (540 RPM)			
*	GM117	Pump Drive Sheave (1000 RPM) 2AK74			
15	GM118	PTO Carrier			
16	GM14	Pump			
17	GM275	Key 3/16" x 1" (Square Key Round Ends)			
18	GM120	Pump Sheave			
19	GM121	Idler Shaft Support			
20	GM122	Spacer			
21	GM123	Arm			
22	GM444	Sheave Spacer (540 & 1000 RPM)			
23	BFR438	Bolt 5/8" x 2"			
24	GM125	Idler Arm			
25	RG8	Flat Washer 5/8"			
26	GM127	Idler Pulley			
27	GM128	Nut 5/8/2011			
28	GM129	V Belt (8/A91) (540 RPM) 93"			
*	GM130	V Belt (8/A96) (1000 RPM) 98"			
29	GM131	V Belt (2/A62) (540 RPM) 64"			
*	GM132	V Belt (2/A52) (1000 RPM) 54"			
30	*GM274	Key 5/16" x 1" Low Height (540 RPM)			
	*G12	Key 5/16" x 1" (1000 RPM)			
31	GM410	Spring (B11108) 540 RPM			
*	GM454	Spring (U10063) 1000 RPM			
32	GM411	Spring (13E29)			
33	GM413	Bearing (UCT208-24-11/16)			
34	GM306	Bolt 3/4" x 5" GR. 5 Full Thread			
35	GM414	1/2-20 x 1.250" GR. 5 Bolt			
36	GM415	Input Yoke Washer			
37	GM416	Idler Pivot Bushing			
38	GM417	3/4-10 Nut			
39	GM445	Slider Bearing Nut			
40	GM423	Flywheel Clutch Bracket			
41	G89	Grease Zerk (#1641)			

FIGURE 4
MILL

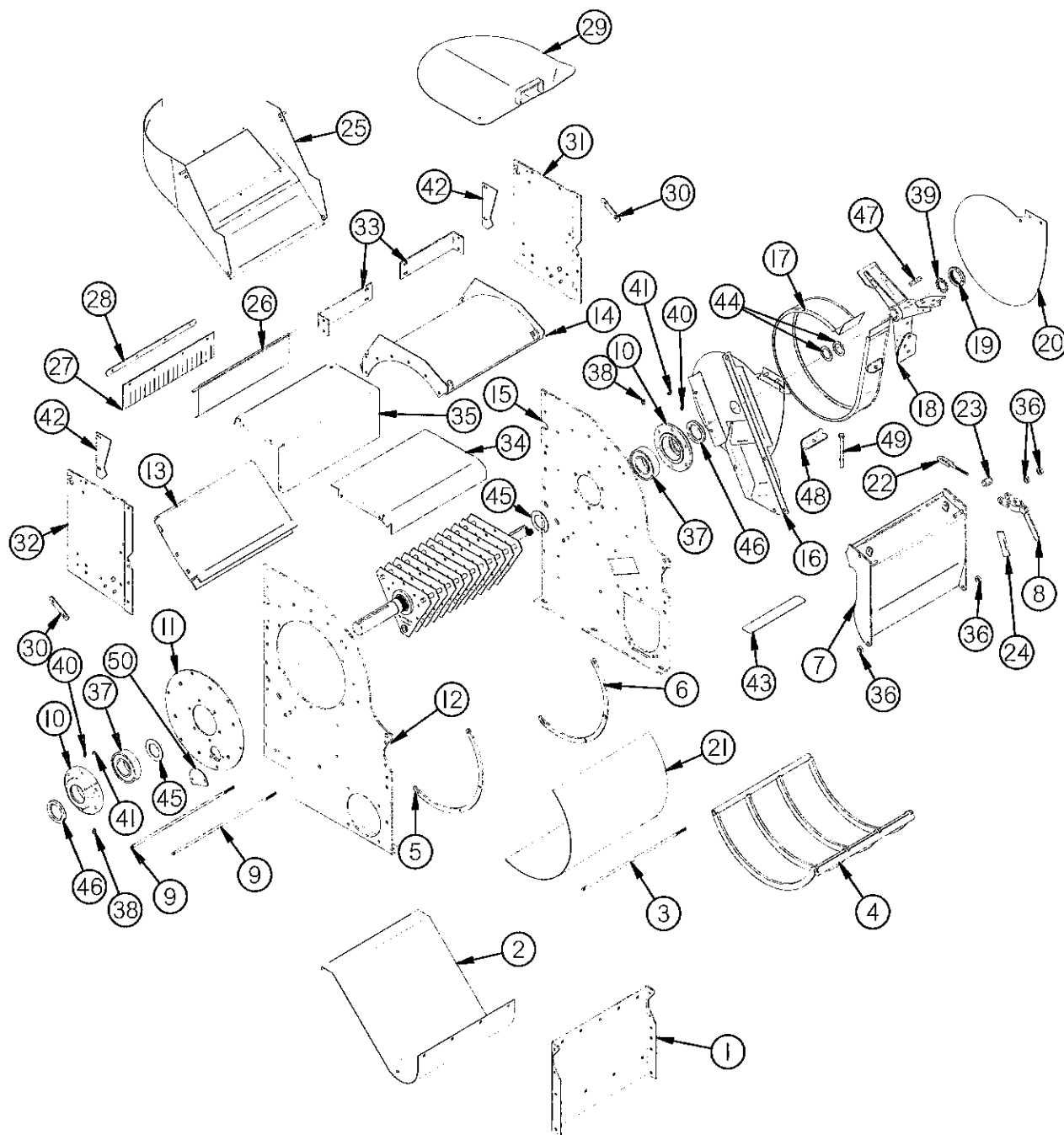
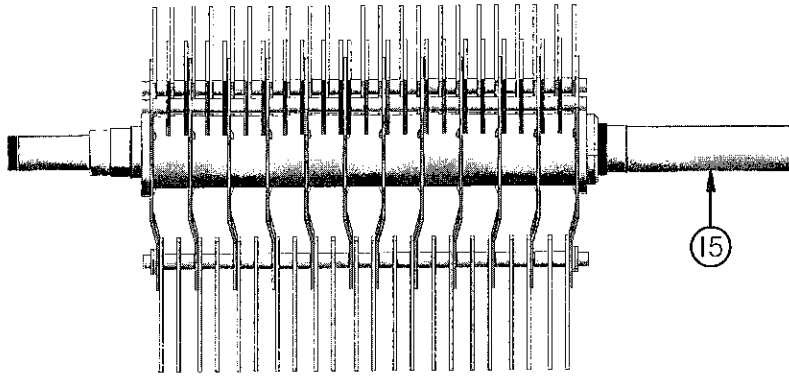


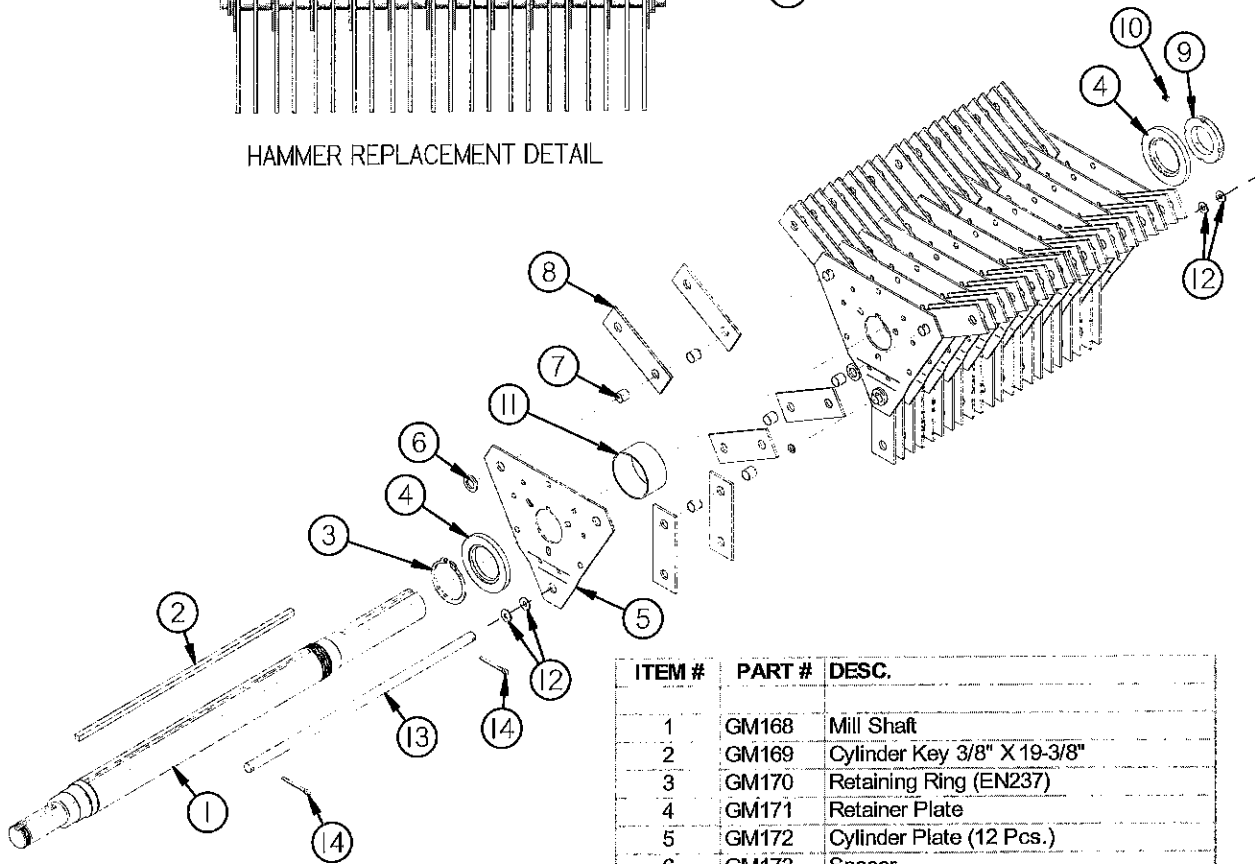
Figure 4 Mill

ITEM #	PART #	DESC.	ITEM #	PART #	DESC.
1	GM133	Grinder Side Panel	37	GM421	Bearing (J211WDN)
2	GM134	Mill Bottom Panel	38	GM419	1/8" Grease Line Adapter (244054)
3	GM135	Mill Long Bolt 1/2" x 22.500"	39	GM431	Locking Washer (WH-08)
4	GM136	Screen Support	40	GM432	3/8-16 Set Screw w/Point
5	GM137	Screen Guide Front	41	S355	3/8-16 Jam Nut
6	GM138	Screen Guide Back	42	GM433	Chute Stop
7	GM139	Grinder Door	43	GM435	Safety Tread
8	GM140	Door Latch	44	GM448	Fan Spacer
9	GM141	Bolt 3/8" x 21.875"	45	GM449	Bearing Spacer
10	GM142	Bearing Housing	46	GM450	Seal (2608)
11	GM143	Cylinder Cover	47	GM462	3/8" x 2-1/2" Key
12	GM144	Mill Front Panel	48	GM316	Blower Band Angle
13	GM145	Throat Plate	49	GM323	3/8" x 8-1/2" GR5 Bolt
14	GM146	Grinder Top	50	GM457	Service Port Cover
15	GM147	Mill Back Panel			
16	GM148	Front Blower Panel			
17	GM149	Blower Band			
18	GM150	Blower Fan			
19	GM151	Nut (N-08)			
20	GM152	Blower Back Panel			
21	GM154	Hammer Mill Screen 1/8"			
*	GM155	Hammer Mill Screen 3/16"			
*	GM156	Hammer Mill Screen 1/4"			
*	GM157	Hammer Mill Screen 5/16"			
*	GM158	Hammer Mill Screen 3/8"			
*	GM159	Hammer Mill Screen 1/2"			
*	GM160	Hammer Mill Screen 5/8"			
*	GM161	Hammer Mill Screen 3/4"			
*	GM162	Hammer Mill Screen 1"			
*	GM163	Hammer Mill Screen 1-1/4"			
*	GM164	Hammer Mill Screen 1-1/2"			
*	GM165	Hammer Mill Screen 2"			
22	GM166	Door Hook			
23	GM167	Door Hook Pivot			
24	GM370	Handle Grip			
25	GM351	Infeed Chute For Infeed Conveyor			
*	GM352	Chute Magnet			
26	GM353	Infeed Flap			
27	GM354	Infeed Flap Rubber			
28	GM355	Infeed Flap Rubber Strap			
29	GM358	Infeed Chute Cover for Item # 25			
30	GM362	Hopper Adjustment			
31	GM363	Grinder Throat Left			
32	GM364	Grinder Throat Right			
33	GM365	Chute Brace			
34	GM366	Chute Mid Shield			
35	GM367	Chute Top Shield			
36	GM180	Pivot Spacer			

FIGURE 5
MILL CYLINDER

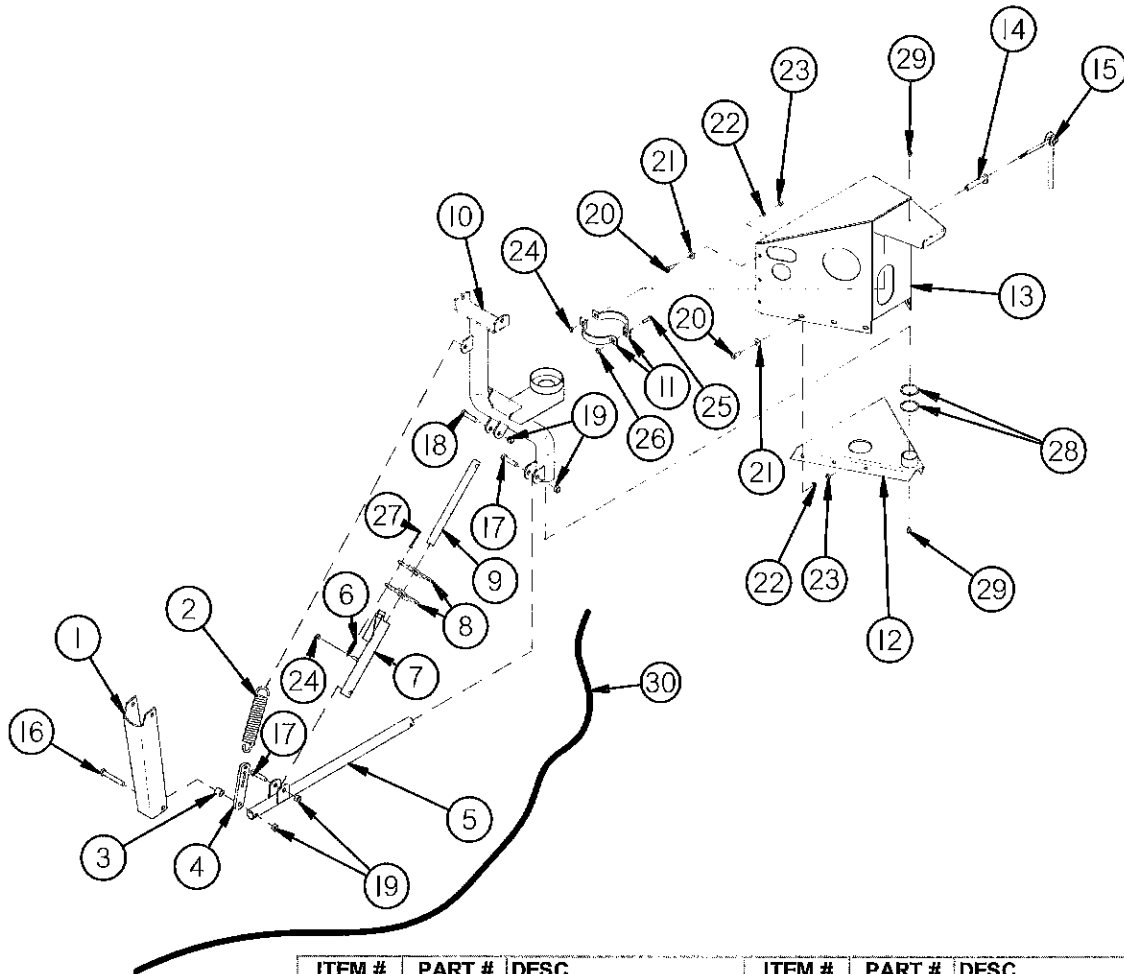


HAMMER REPLACEMENT DETAIL



ITEM #	PART #	DESC.
1	GM168	Mill Shaft
2	GM169	Cylinder Key 3/8" X 19-3/8"
3	GM170	Retaining Ring (EN237)
4	GM171	Retainer Plate
5	GM172	Cylinder Plate (12 Pcs.)
6	GM173	Spacer
7	GM174	Hammer Spacer
8	GM175	Hammer (66 Pcs.)
9	GM176	Cylinder Shaft Nut (N-12)
10	GM277	Set Screw 1/4"-20 X .375
11	GM177	Spacer Plate
12	GM430	Balance Washer (4 Pcs)
	GM44	Hammer Shaft
13	GM44	Hammer Shaft
14	HSB53	Cotter Pin (3/16" x 1-1/4")
14	HSB53	Cotter Pin (3/16" x 1-1/4")
15	GM451	Complete Mill Cylinder

FIGURE 6
INFEED CONVEYOR PIVOT



ITEM #	PART #	DESC.	ITEM #	PART #	DESC.
1	GM203	Support	16	LW131	1/2" X 3-1/2" Bolt
2	GM204	Spring (40174)	17	BFR119	1/2" X 2-1/4" Bolt
3	GM205	Spacer	18	F52	1/2" X 2" Bolt
4	GM206	Spring Adjustment	19	R11	1/2" Lock Nut
5	GM207	Pivot Linkage	20	X111	3/8" X 1" Bolt
6	GM208	Spring (17H387)	21	X67	3/8" Flat Washer
7	GM209	Locking Tube	22	B68	3/8" Lock Washer
8	GM210	Locking Lever	23	K60	3/8" Nut
9	GM211	Locking Shaft	24	K93	3/8" Lock Nut
10	GM212	Pivot Main Support	25	GM218	5/16" X 1-1/4" Bolt
11	GM213	Brake Band	26	D81	5/16" Lock Nut
12	GM214	Bottom Support	27	HSB55	3/16" X 1" Cotter Pin
13	GM215	Top Support	28	GM219	Pivot Spacer
14	GM216	Lever Guide	29	RG51	Grease Fitting 90°
15	GM217	Brake Lever	30	GM434	Trip Rope

FIGURE 7
INFEED CONVEYOR

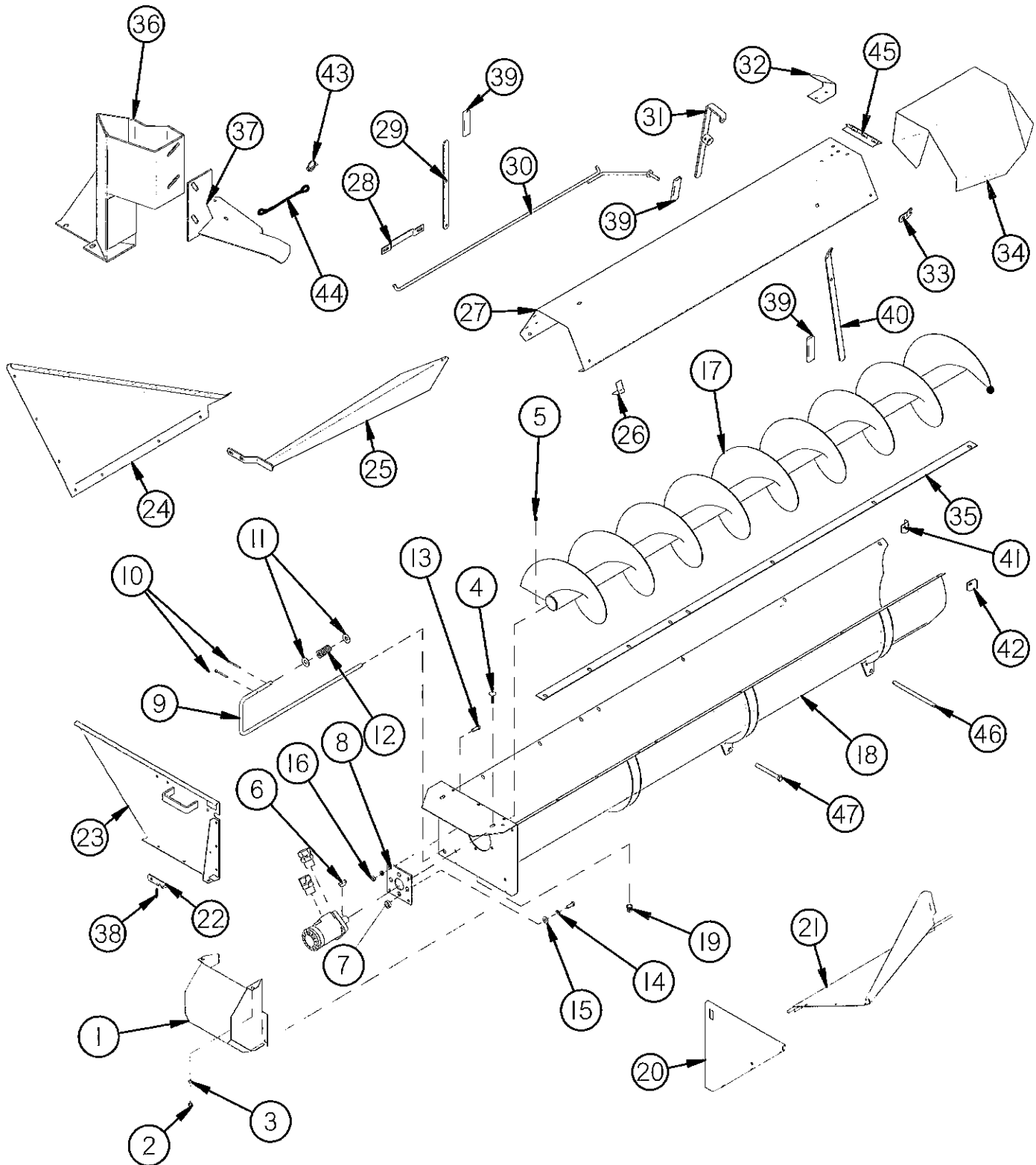


Figure 7 Infeed Conveyor

ITEM #	PART #	DESC.
1	GM178	Shield
2	T116	5/16" Nut
3	RGB39	5/16" Lock Washer
4	GM179	5/16" X 1" Carriage Bolt
5	BFR22	1/4"-20 x 1/2" Set Screw
6	5B10	1/4" Key
7	GM180	Spacer
8	GM181	Motor Mount
9	GM182	Handle Latch
10	X43	1/8" X 1" Cotter Pin
11	K68	1/2" Flat Washer
12	17G128	Spring
13	G110	3/8" X 3/4" Bolt
14	B68	3/8" Lock Washer
15	X67	3/8" Flat Washer
16	K60	3/8" Nut
17	GM184	Auger
18	GM185	Trough
19	GM202	1/2" Plug (5406-8P)
20	GM186	Trough End Right
21	GM187	Side Trough
22	GM188	Trough Latch
23	GM189	Trough End
24	GM190	Trough Side Left
25	GM191	Auger Guard
26	GM192	Support Pivot
27	GM193	Conveyor Cover
28	GM194	Handle Guide
29	GM195	Handle
30	GM196	Flow Control Rod
31	GM197	Flow Control Handle
32	GM198	Trough Extension Stop
33	GM199	Cover Holder
34	GM200	Trough Extension
35	GM201	Scraper
36	GM54	Transport Post
37	GM75	Transport Support
38	GM208	Latch Spring (17H387)
39	GM370	Handle Grip
40	GM371	Control Handle
41	GM372	Cover Stop Right
42	GM373	Cover Stop Left
43	PB190	Lynch Pin
44	S122	Lanyard
45	GM126	Hinge
46	GM458	Pivot Pin
47	BFR224	1/2" x 4-1/2" GR5 Bolt

FIGURE 8
UNLOADING AUGER

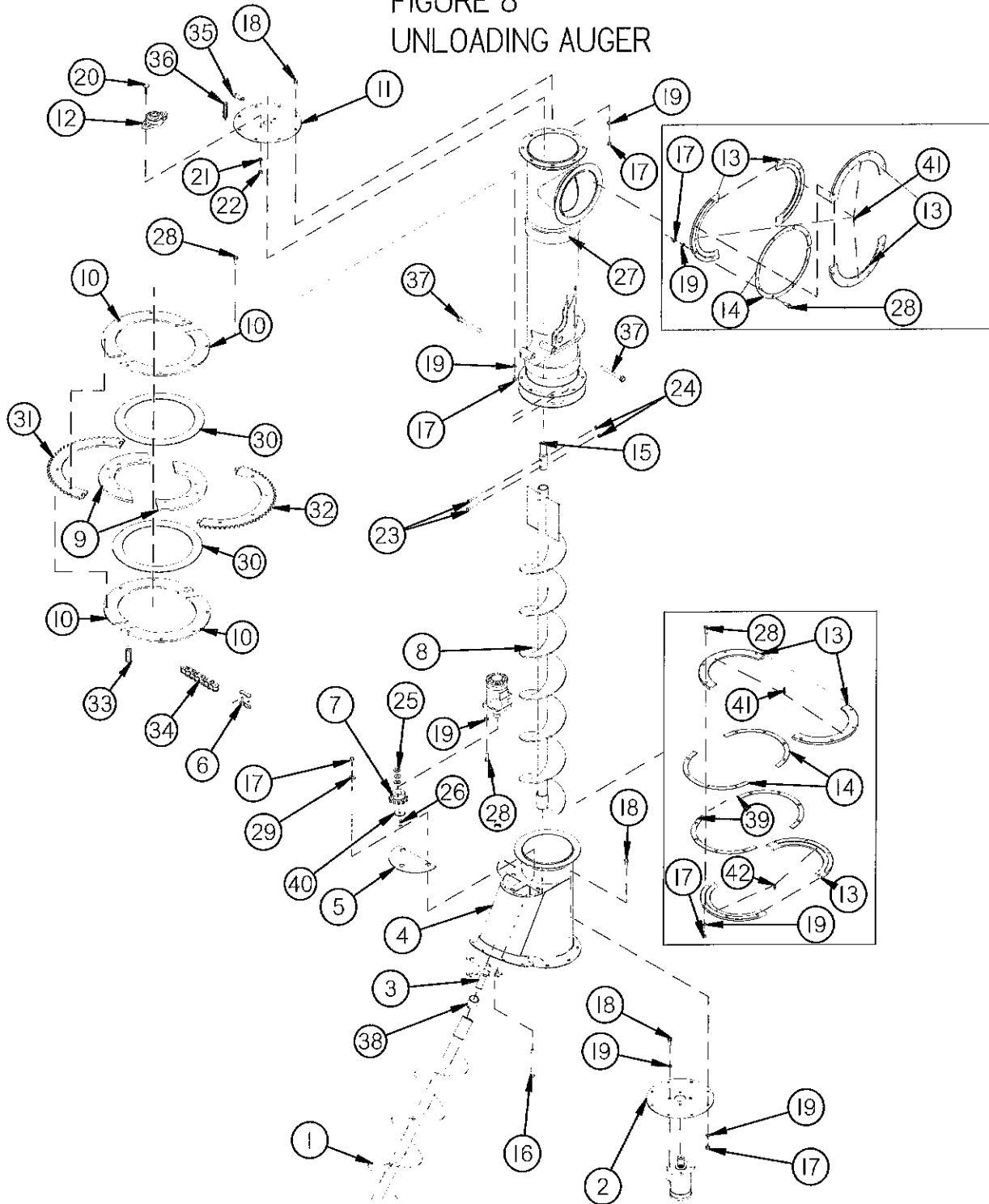


Figure 8 Unloading Auger

ITEM #	PART #	DESC.
1	GM220	Tank Unloading Auger
2	GM221	Auger Drive Cap
3	GM222	Auger Shaft
4	GM223	Auger Tube
5	GM224	Overflow Cover
6	D39	#60 Connector Link
7	GM226	Sprocket 60-B11
8	GM227	Vertical Auger
9	GM228	Clutch Plate
10	GM229	Clutch Face
11	GM230	End Cap
12	T40	Bearing
13	GM231	Collar
14	GM232	Collar Shim
15	GM233	Vertical Auger Shaft
16	17G141	3/8" X 1-1/2" GR.5 Bolt
17	K60	3/8" Nut
18	80N57	3/8" X 3/4" Bolt
19	B68	3/8" Lock Washer
20	GM179	5/16" X 1" Carriage Bolt
21	GRB39	5/16" Lock Washer
22	T116	5/16" Nut
23	GM235	1/4" X 2 1/4" Bolt
24	D65	1/4" Lock Nut
25	T16	1/4" Flat Washer
26	23N223	1/4" X 1 1/4" Bolt
27	GM236	Pivot Tube
28	17G141	3/8" X 1 1/4" Bolt
29	X67	3/8" Flat Washer
30	GM237	Clutch
31	GM238	Turn Sprocket B
32	GM239	Turn Sprocket A
33	WM210	Clutch Spring (Red)
34	GM409	#60 Chain x 81 Pitches
35	GM436	Hose Holder
36	23N187	Spring
37	9S16	1/2" x 4-1/2" Bolt (Full Thread)
38	RG11	Bushing (1.010" ID x 1-1/4" x 2")
39	GM459	Collar Shim
40	GM461	Pinion Stop
41	RG51	1/4-28 90° Grease Zerk (1911)
42	G89	1/4-28 Grease Zerk (1641)

FIGURE 9
CONVEYOR DRIVE

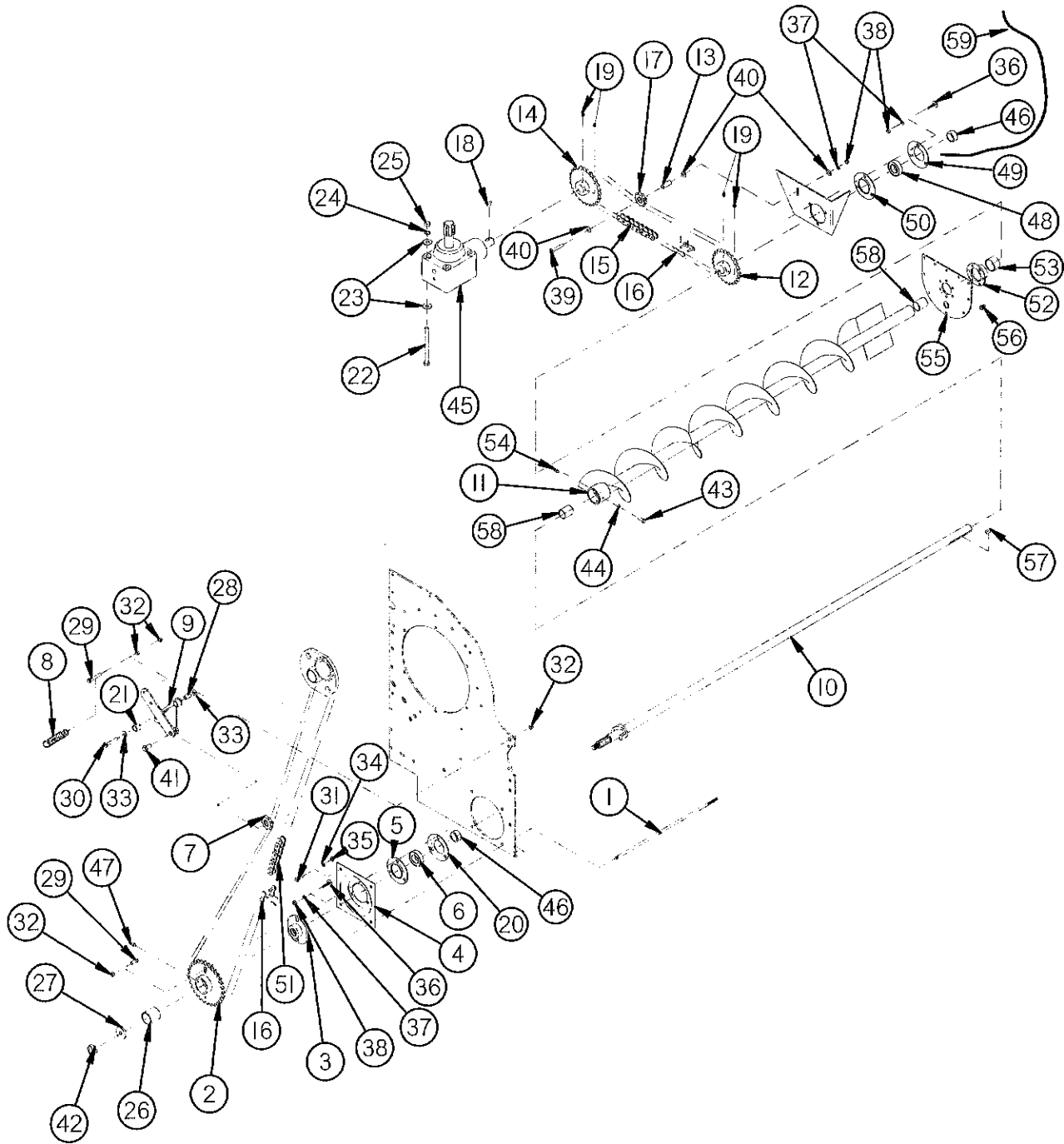
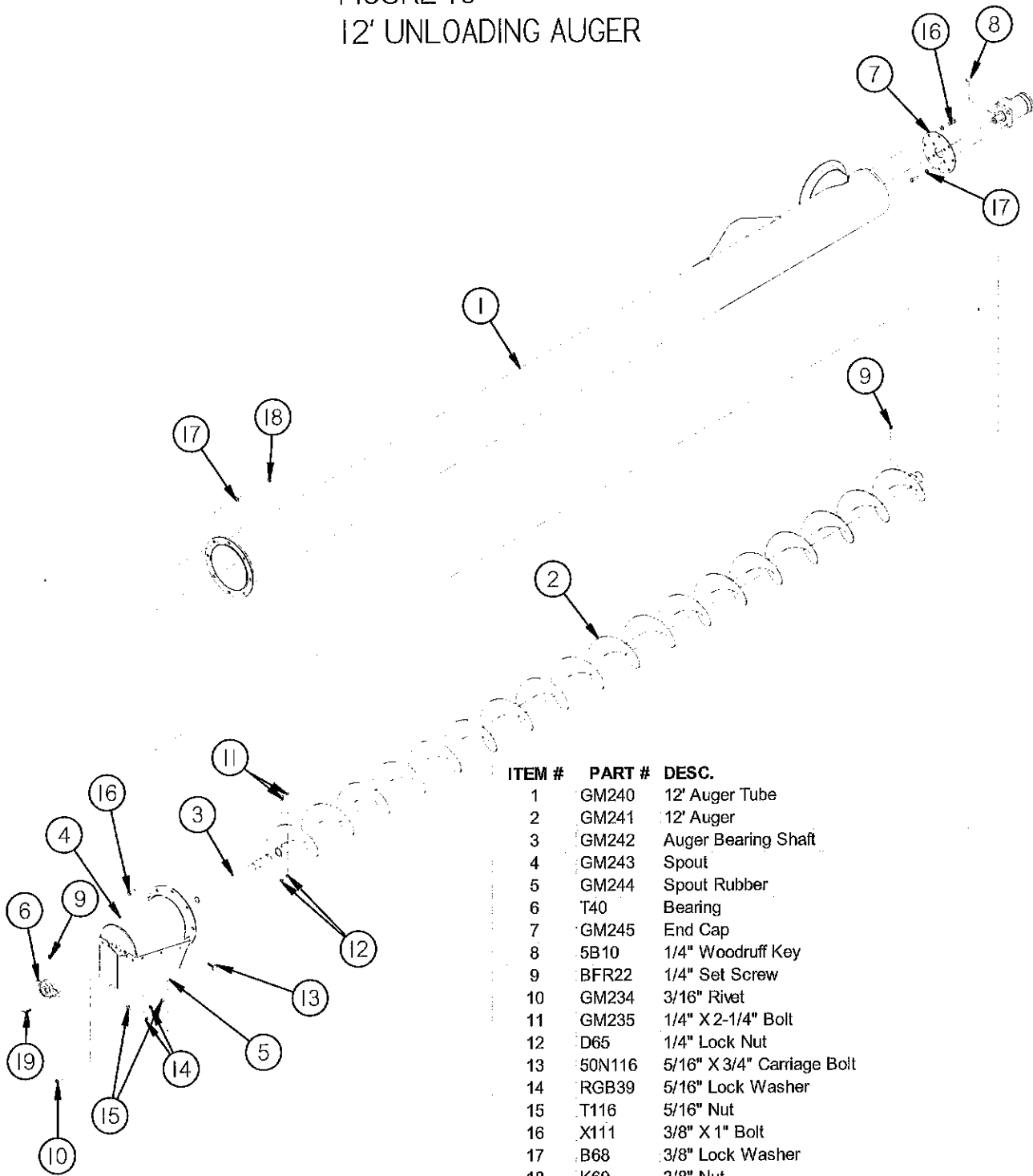


Figure 9 Conveyor Drive

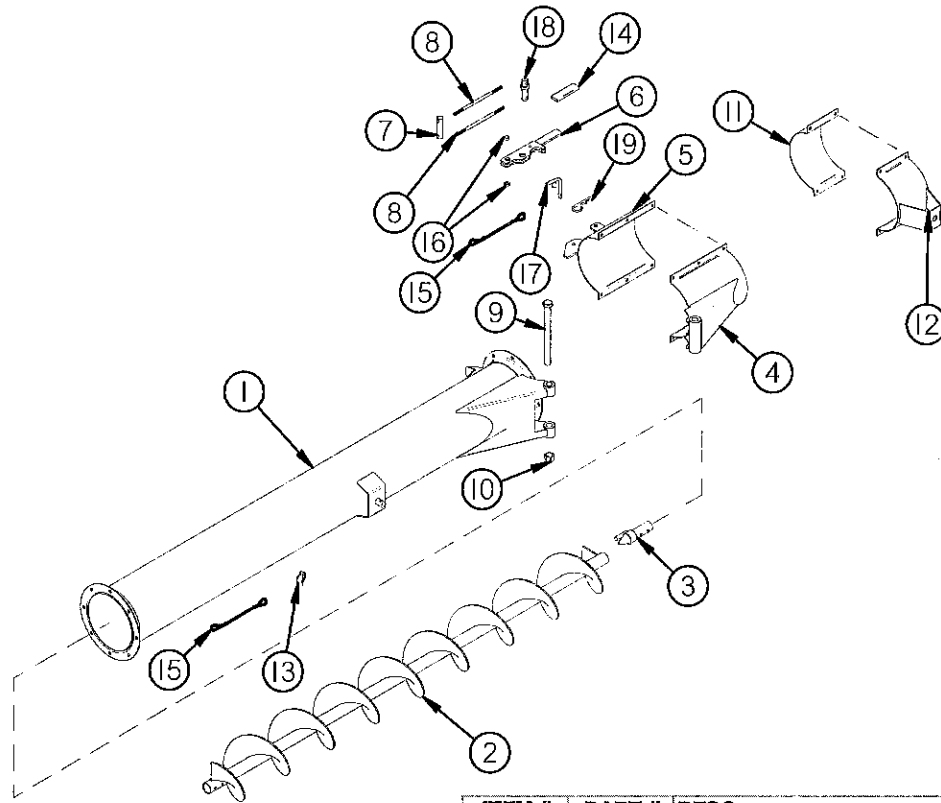
ITEM #	PART #	DESC.	ITEM #	PART #	DESC.
1	GM141	Rod 3/8" X 21.875"	47	G89	Grease Zerk
2	GM247	Sprocket 30T (540 RPM)	48	WM29	Bearing (SA207-20G)
*	GM248	Sprocket 54T (1000 RPM)	49	F143	Flange (Greaseable)
3	GM249	Shear Flange	*	GM424	1/4"-28 Grease Line Adapter
4	GM250	Bearing Bracket	50	F145	Flange
5	F14	Bearing Flange	51	GM361	#60 Chain X 66 Pitches (540RPM)
6	F115	Bearing 1-1/4"	*	GM343	#60 Chain X 76 Pitches (1000 RPM)
7	GM251	Idler Sprocket (60A15)	52	GM393	Auger Seal
*	GM246	Bearing (203 RR2 USA Fafnir)	53	S50	Bushing (A-2001 x 1-1/8")
8	GM252	Idler Spring (077055)	54	G89	Grease Zerk (#1641)
9	GM253	Idler Bracket	55	GM441	Auger Transition Cap
10	GM254	Trans. Drive Shaft	56	GM202	1/2" Plug (5406-8P)
11	GM255	Intake Conveyor Auger	57	G23	Key 5/16" x 1-3/8"
12	GM291	Sprocket 23T	58	RG132	Bushing (1.265 ID x 1-1/2" x 2" S-1503)
13	GM292	Idler Spacer	59	GM36	Grease Line 30"
14	GM293	Sprocket 26T			
15	GM294	#60 Chain X 48 Pitch			
16	D39	#60 Connector Link			
17	GM422	Idler Sprocket 8 Tooth			
*	WM125	Bearing Sprocket (SKF 6000-2RSJEM)			
18	GM295	5/16" x 1-1/4" Woodruff Key			
19	S435	5/16" X 3/8" Set Screw			
20	F114A	Bearing Flange Greaseable 45°			
21	GM296	Idler Pivot Bushing (3/4" OD x .635" ID x 3/4")			
22	BFR405	1/2" X 5-1/2" Bolt			
23	K68	1/2" Flat Washer			
24	R35	1/2" Lock Washer			
25	R29	1/2" Nut			
26	GM297	Bushing (2.015 ID X 2-1/4 OD X1.312)			
27	GM298	Transfer Auger Sprocket Washer			
28	GM299	Tensioner Pivot			
29	RGB38	5/16" X 1" GR. 5 Bolt			
30	12V126	5/16" X 2" Bolt			
31	12V66	5/16" X 3/4" Bolt GR 5			
32	D81	5/16" Lock Nut			
33	GM300	5/16" Flat Washer			
34	RGB39	5/16" Lock Washer			
35	T116	5/16" Nut			
36	BFR247	3/8" X 1" Carriage Bolt			
37	B68	3/8" Lock Washer			
38	K60	3/8" Nut			
39	T123	3/8" X 2-1/4" Bolt			
40	X67	3/8" Flat Washer			
41	50N183	5/8" X 1-1/4" Bolt			
42	BFR104	3/4" Nylock Nut (Thin)			
43	D110	1/4" X 1" Bolt GR. 5			
44	D65	1/4" Lock Nut			
45	GM273	Gearbox			
46	F16	Lock Collar			

FIGURE 10
12' UNLOADING AUGER



ITEM #	PART #	DESC.
1	GM240	12' Auger Tube
2	GM241	12' Auger
3	GM242	Auger Bearing Shaft
4	GM243	Spout
5	GM244	Spout Rubber
6	T40	Bearing
7	GM245	End Cap
8	5B10	1/4" Woodruff Key
9	BFR22	1/4" Set Screw
10	GM234	3/16" Rivet
11	GM235	1/4" X 2-1/4" Bolt
12	D65	1/4" Lock Nut
13	50N116	5/16" X 3/4" Carriage Bolt
14	RGB39	5/16" Lock Washer
15	T116	5/16" Nut
16	X111	3/8" X 1" Bolt
17	B68	3/8" Lock Washer
18	K60	3/8" Nut
19	GM179	5/16" X 1" Carriage Bolt

FIGURE II
3' & 6' AUGER EXTENSION



ITEM #	PART #	DESC.
1	GM278	6' Extension
*	GM279	3' Extension
2	GM280	6' Auger
*	GM281	3' Auger
3	GM282	Auger Connect Shaft
4	GM283	Pivot Clamp
5	GM284	Latch Clamp
6	GM285	Latch Handle
7	GM286	Latch Pivot Shaft
8	GM287	Latch Rod
9	GM288	Bolt 3/4" x 9" GR.5
10	HE7	3/4"-10 Lock Nut
11	GM289	Transport Lock Clamp
12	GM290	Transport Lock Latch
13	PB190	Lynch Pin
14	S403	Handle Grip
15	S122	Lanyard
16	GM180	Pivot Spacer
17	GM39	Latch Pin
18	GM369	Latch Pivot Pin
19	ES7	Hair Pin

FIGURE 12
TANK

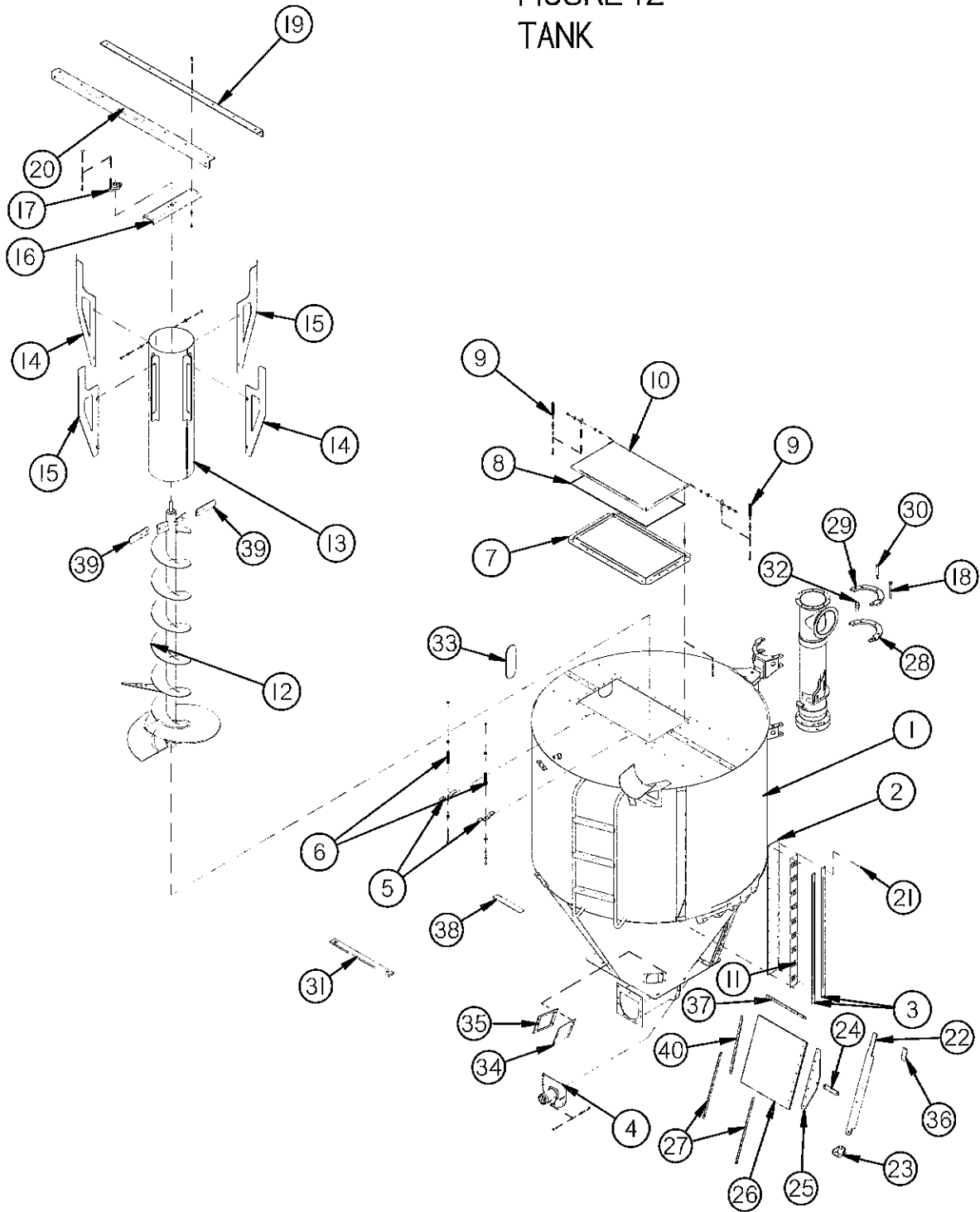


Figure 12 Tank

PART #		DESC.
1	GM301	Tank
2	GM302	Window
3	GM303	Window Frame
4	GM304	Motor Mount
5	GM305	Lid Latch
6	GM225	Latch Spring (A262)
7	GM307	Lid Frame
8	GM308	Lid Gasket
9	GM309	1 Bolt & Spring Assy. (A162 Spring)
10	GM310	Lid
11	GM3119	Decal (Bushel Scale)
12	GM311	Mixing Auger
13	GM312	Mixing Auger Tube
14	GM313	Mixing Tube Support B
15	GM314	Mixing Tube Support
16	GM315	Mixing Auger Top Support
17	T40	Bearing
18	GM463	1/2" x 5" GR.5 Bolt (Full Thread)
19	GM317	Tank Top Frame Channel Back
20	GM318	Tank Top Frame Channel Front
21	GM234	Pop Rivit 3/16" x .700" (0155997)
22	GM334	Door Handle
23	GM335	Door Stop
24	GM336	Door Linkage
25	GM337	Door Edge
26	GM338	Door
27	GM339	Door Seal Strap
*	GM348	Rubber Door Seal Front (Left)
*	GM349	Rubber Door Seal Back (Right)
28	GM340	Split Ring Bottom
29	GM341	Split Ring Top
30	GM342	Step Bolt
31	GM442	Poly Strip
32	GM345	Roller
33	GM346	Top Sight Window
*	GM347	Window Gasket
34	GM356	Cleanout Door
35	GM357	Cleanout Gasket
36	S403	Handle Grip
37	GM391	Inside Door Seal Strap
*	GM392	Inside Door Seal
38	GM435	Safety Tread
39	GM437	Paddle Mixer
40	GM438	Door Seal Strap
*	GM439	Rubber Door Seal

FIGURE 13
AUGER CIRCUIT

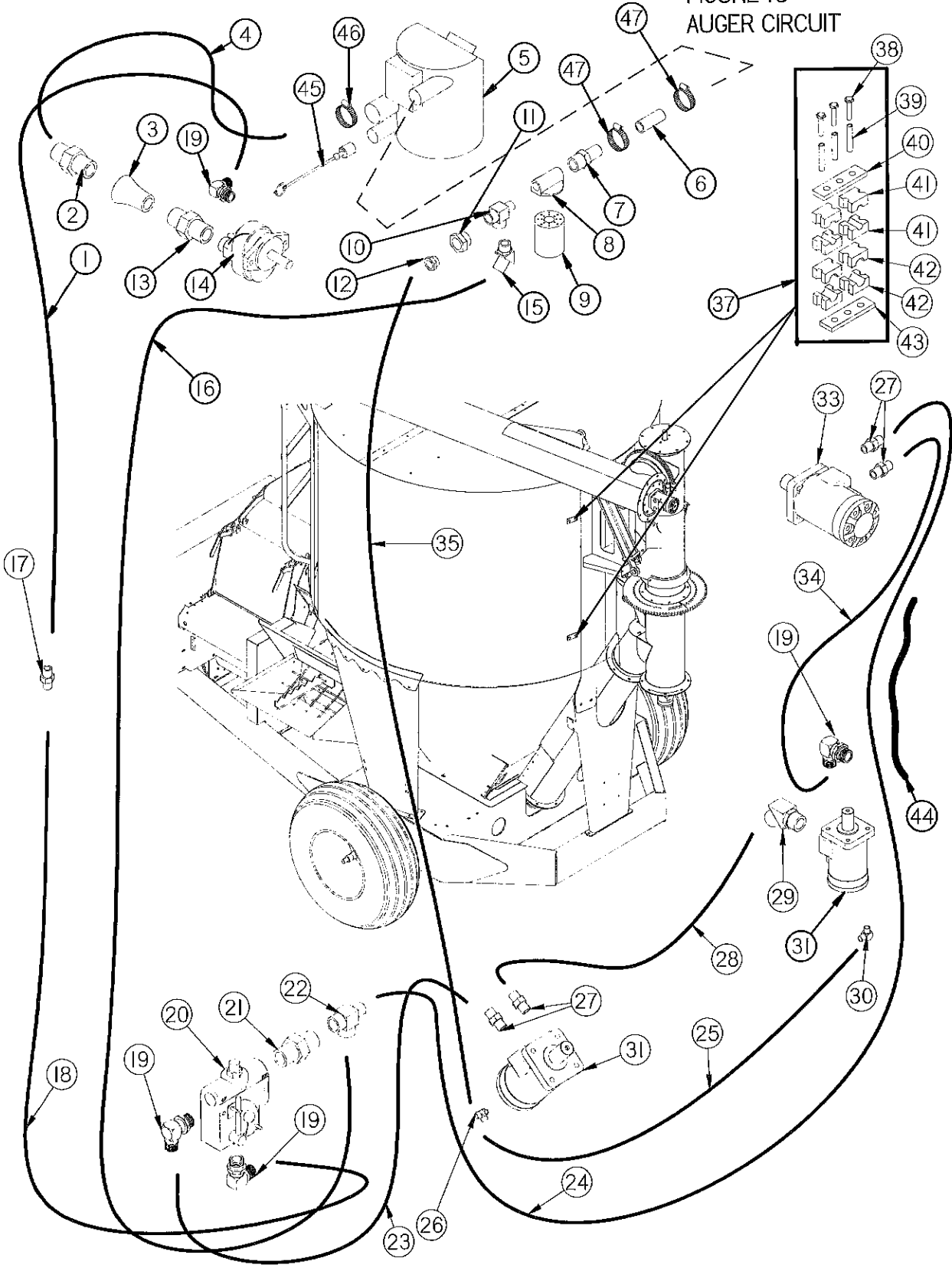
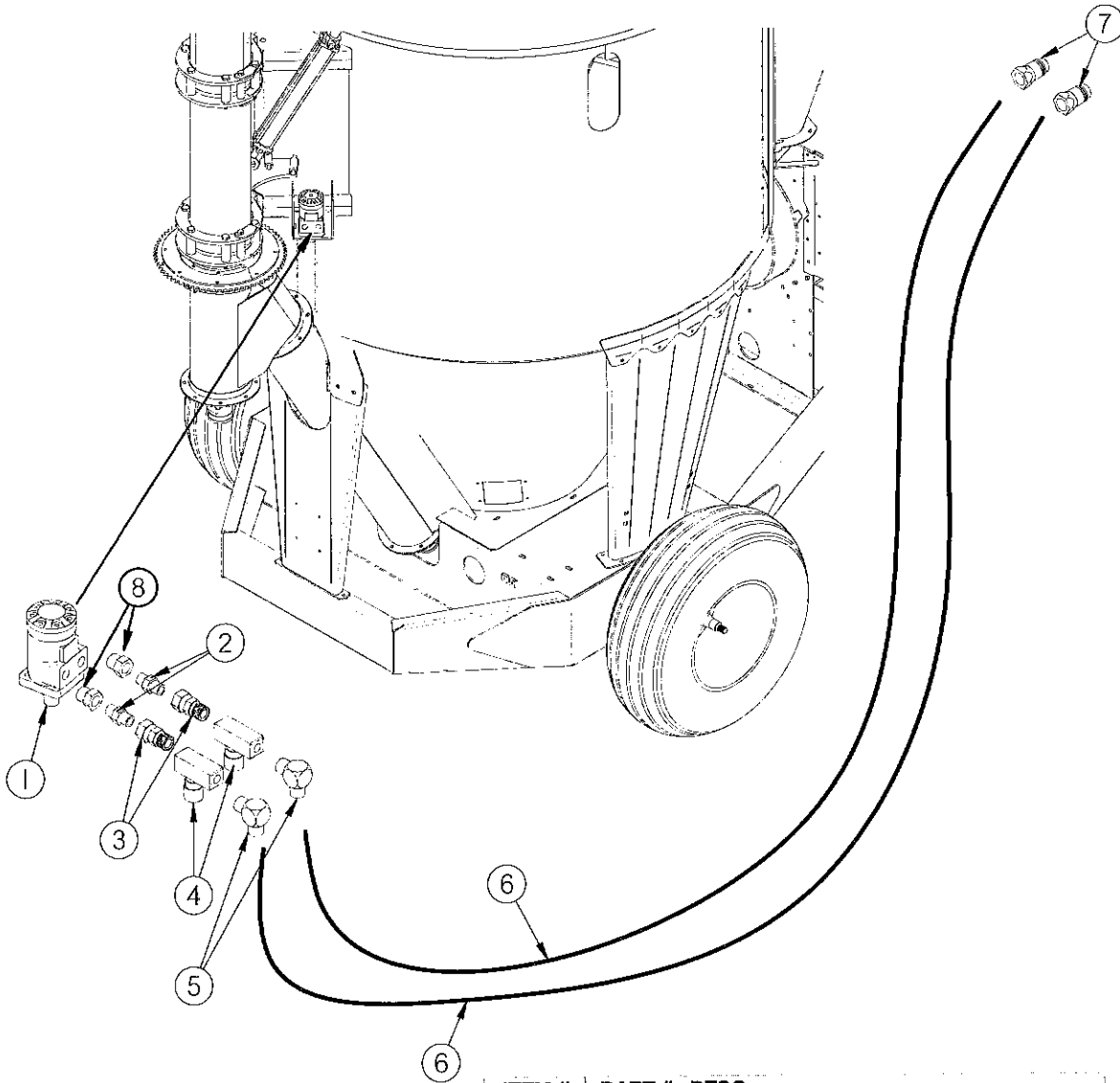


Figure 13 Auger Circuit

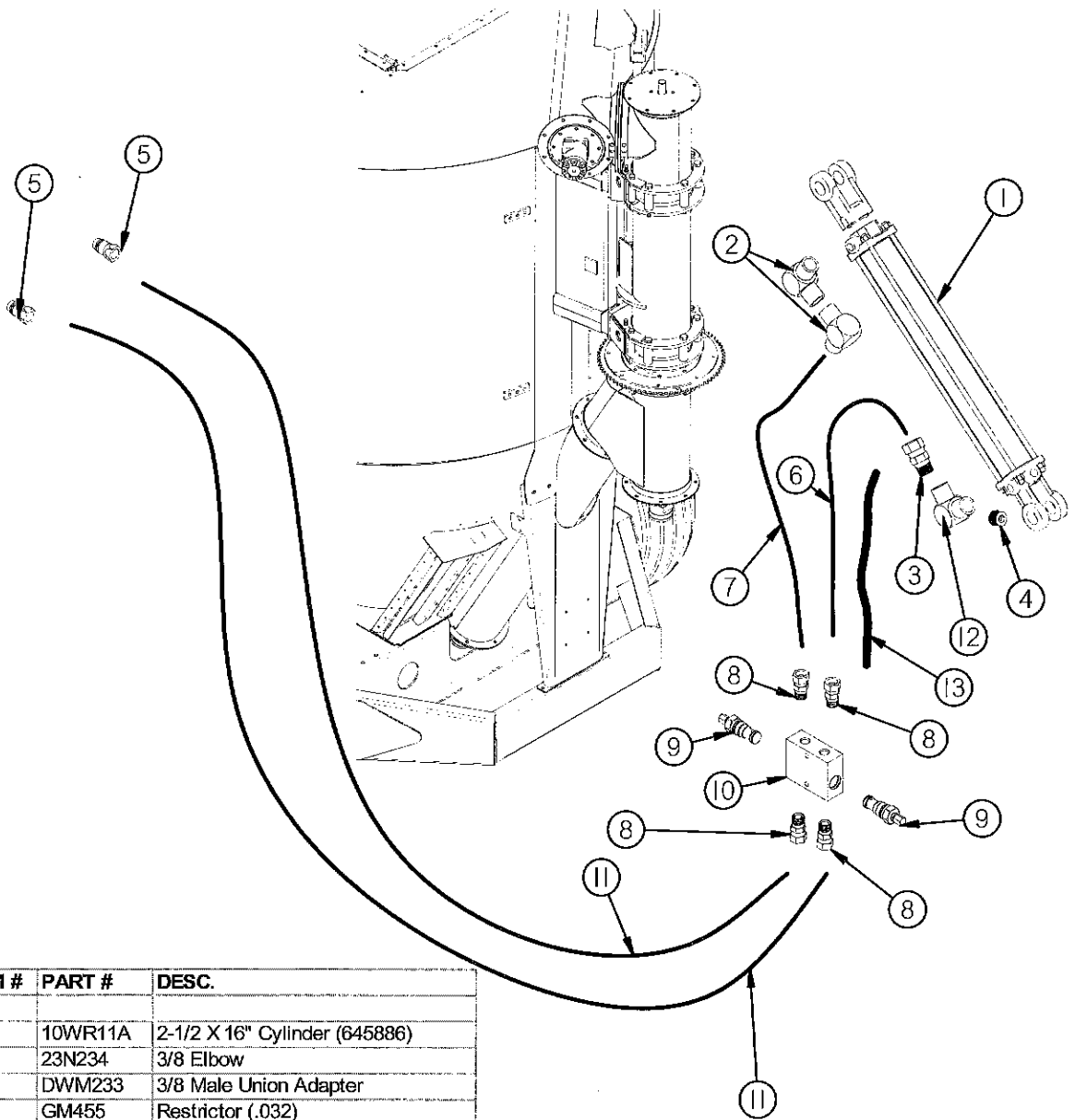
PART #	DESC.
1	GM1 1/2 X 32" Hose
2	GM2 Adapter (24FTX-S)
3	GM3 Pipe Reducer (1 1/2 NPT TO 3/4)
4	GM4 1 1/2 X 64" Suction Hose
5	GM5 Reservoir
6	GM6 3/4 X 3" Hose
7	GM7 3/4" Hose Barb
8	LW288 Filter Head
9	LW289 Filter Element
10	GM10 3/4 Street Tee (3/4 MRO)
11	GM11 Reducer (3/4 X 1/4 PTR)
12	GM12 Adapter (4-4 FTX)
13	GM13 Adapter (12-3/4 F50F-S)
14	GM14 Pump
15	GM15 45° Elbow (12VTX)
16	GM16 3/4 X 76" Hose
17	GM17 Union (8 HTX)
18	GM18 1/2 X 30" Hose
19	GM19 Elbow (8-10 C50X)
20	GM20 Flow Control
21	GM21 Adapter (12-10 F50X-S)
22	GM22 Tee (12R6X)
23	GM23 1/2 X 30" Hose
24	GM24 1/2 X 160" Hose
25	GM25 1/4 X 80" Hose
26	GM26 Tee (4R50X-S)
27	GM27 Adapter (8-10 F50X)
28	GM28 1/2 X 79" Hose
29	GM29 45° Elbow (8-10 V50X)
30	GM30 Elbow (4C50X-S)
31	GM31 Motor (101-2116-009)
33	GM33 Motor (101-1010-009)
34	GM34 1/2x116 Hose
35	GM35 1/4 X 51" Hose
37	GM8 Hose Clamp 3/8" X 1/2" (Complete)
38	GM62 Bolt
39	GM63 Tube
40	GM64 Top Plate
41	GM65 3/8" Insert
42	GM66 1/2" Insert
43	GM67 Weld Plate
44	GM32 Spiral Wrap (HG125) 1-1/4" x 2'
45	GM37 Port Cap (TFH-38)
46	GM38 1-1/2" Hose Clamp
47	DWM123 1" Hose Clamp

FIGURE 14
 AUGER SWING CIRCUIT



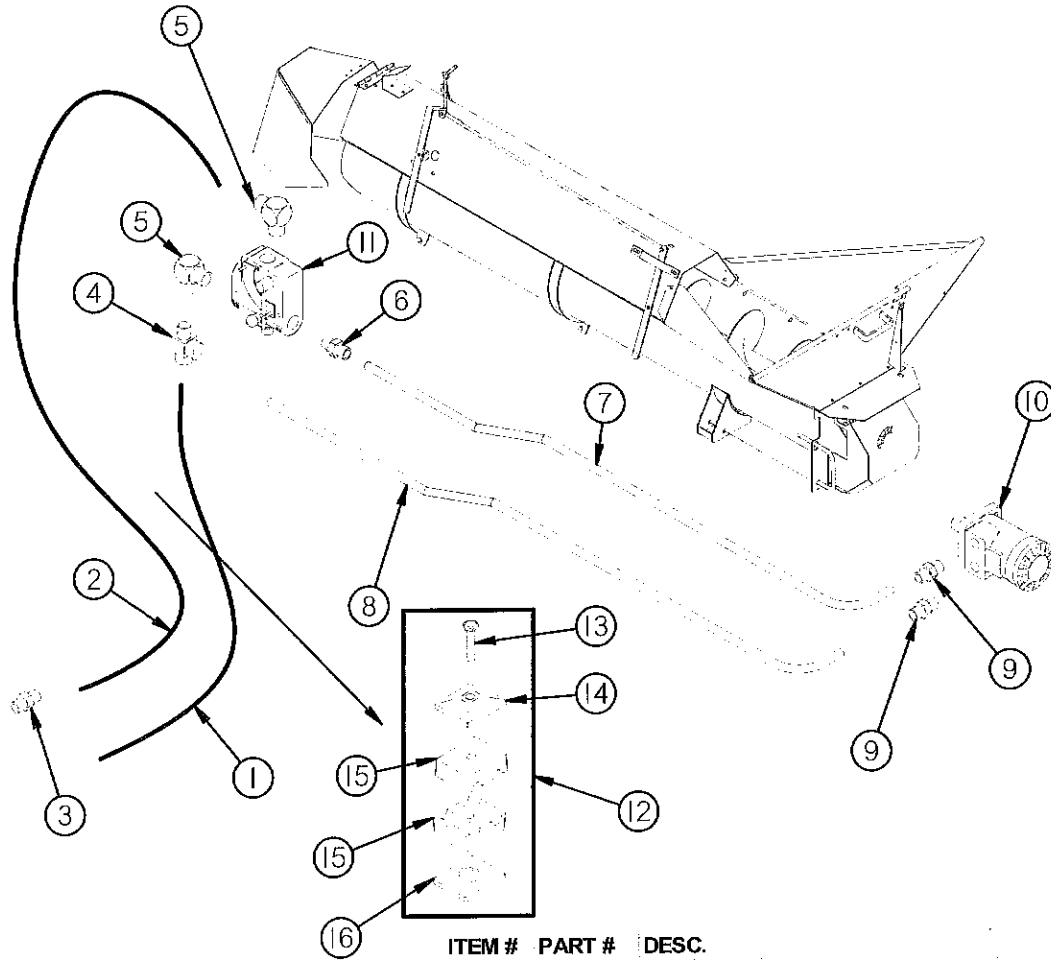
ITEM #	PART #	DESC.
1	GM412	Motor (Parker) TB0390FP100AAAB
2	16SV351	3/8" Nipple Nut (5404-6-6)
3	DWM233	3/8" Male Union Adapter
4	CHM265	Needle Valve (F600S)
5	GM42	Elbow (6-6 CTX)
6	GM43	3/8 X 264" Hose
7	DWM205	1/2 Male Coupler
8	JB82	Bushing 1/2" to 3/8" (5406-8-6)

FIGURE 15
AUGER LIFT CIRCUIT



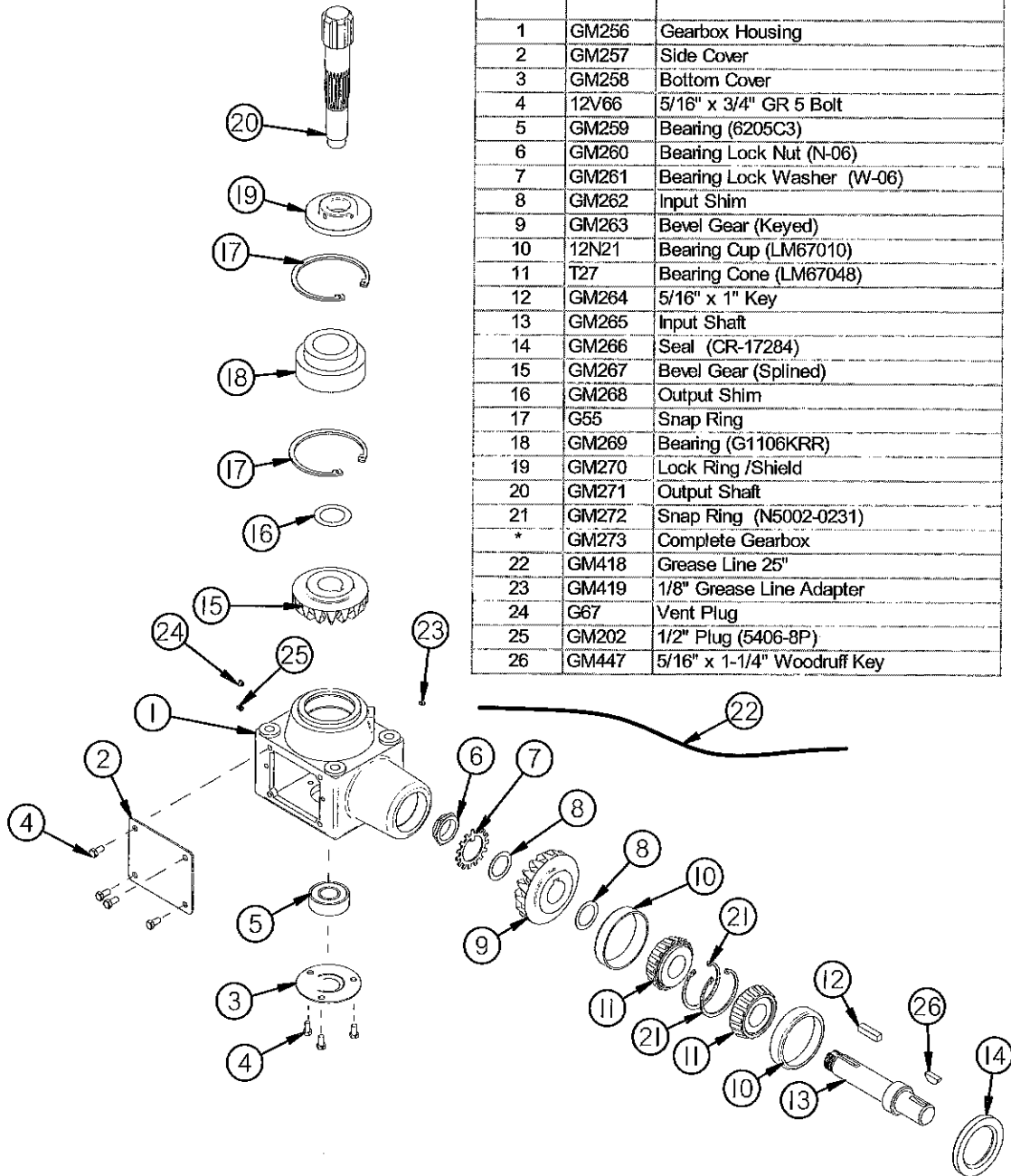
ITEM #	PART #	DESC.
1	10WR11A	2-1/2 X 16" Cylinder (645886)
2	23N234	3/8 Elbow
3	DWM233	3/8 Male Union Adapter
4	GM455	Restrictor (.032)
5	DWM205	1/2 Male Coupler
6	GM45	3/8 X 130" Hose
7	GM46	3/8 X 125" Hose
8	GM47	Adapter (0507-6-6)
9	GM48	Relief Cartridge
10	GM49	Relief Valve Body
*	GM50	Relief Valve Complete
11	GM51	3/8 X 240" Hose
12	GM446	3/8" Street Elbow w/ Restrictor
13	GM32	Spiral Wrap (HG125) 1-1/4" x 2'

FIGURE 16
INFEED AUGER CIRCUIT



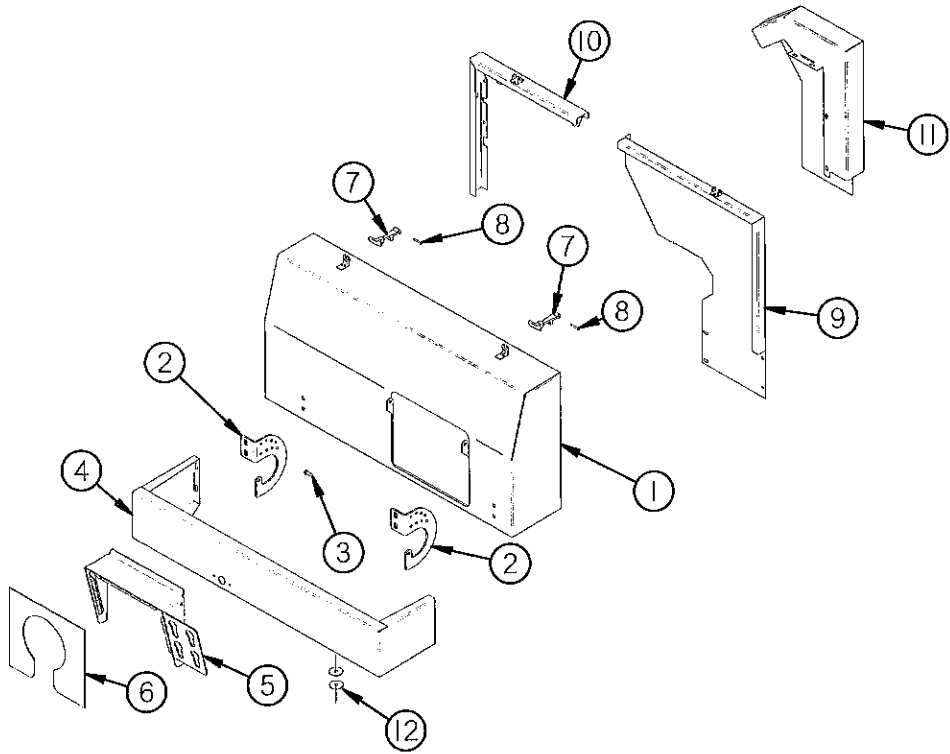
ITEM #	PART #	DESC.
1	GM52	1/2 X 81 1/4" Hose
2	GM53	1/2 X 97 1/2" Hose
3	GM17	Adapter (8 HTX)
4	GM55	Tee (10 R6X)
5	GM56	Elbow (10 C50X)
6	GM57	Adapter (10 F50X)
7	GM58	Pressure Tube
8	GM59	Return Tube
9	GM57	Adapter (10F50X)
10	GM61	Motor (101-1013-009)
11	GM20	Flow Control
12	GM9	Hose Clamp 1/2" Twin (Complete)
13	GM68	Bolt
14	GM69	Top Plate
15	GM70	1/2" Insert
16	GM71	Weld Plate

FIGURE 17
GEARBOX



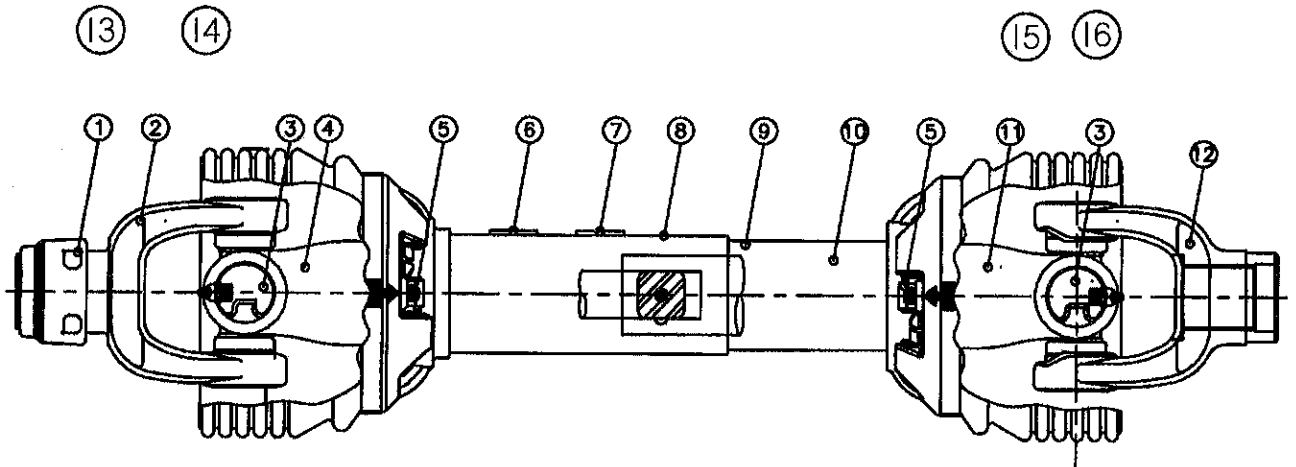
ITEM #	PART #	DESC.
1	GM256	Gearbox Housing
2	GM257	Side Cover
3	GM258	Bottom Cover
4	12V66	5/16" x 3/4" GR 5 Bolt
5	GM259	Bearing (6205C3)
6	GM260	Bearing Lock Nut (N-06)
7	GM261	Bearing Lock Washer (W-06)
8	GM262	Input Shim
9	GM263	Bevel Gear (Keyed)
10	12N21	Bearing Cup (LM67010)
11	T27	Bearing Cone (LM67048)
12	GM264	5/16" x 1" Key
13	GM265	Input Shaft
14	GM266	Seal (CR-17284)
15	GM267	Bevel Gear (Splined)
16	GM268	Output Shim
17	G55	Snap Ring
18	GM269	Bearing (G1106KRR)
19	GM270	Lock Ring /Shield
20	GM271	Output Shaft
21	GM272	Snap Ring (N5002-0231)
*	GM273	Complete Gearbox
22	GM418	Grease Line 25"
23	GM419	1/8" Grease Line Adapter
24	G67	Vent Plug
25	GM202	1/2" Plug (5406-8P)
26	GM447	5/16" x 1-1/4" Woodruff Key

FIGURE 18
SHIELDS



ITEM #	PART #	DESC.
1	GM321	Front Shield
2	GM322	Shield Hinge
3	RGB38	5/16" x 1" GR. 5 Bolt
*	D110	1/4" x 1" GR.5 Bolt
4	GM324	Flywheel Shield Lower
5	GM325	PTO Guard
6	GM326	Poly PTO Guard
7	X192	Rubber Latch
8	X195	Latch Pin
9	GM327	Flywheel Shield Back Left
10	GM328	Top Seal
11	GM329	Hydraulic Pump Shield
12	S304	Washer

FIGURE 19
PTO



ITEM #	PART #	DESC.
1	16SV274	Safety Slide Lock Repair Kit 540 RPM
*	"	Safety Slide Lock Repair Kit 1000 RPM 1-3/8"
2	GM374	Safety Slide Lock Yoke Assembly 540RPM
*	GM375	Safety Slide Lock Yoke Assembly 1000RPM 1-3/8"
3	GM376	55R Cross & Bearing Kit
4	GM377	Yoke & Shaft
5	GM378	Nylon Repair Kit (Not Shown)
6	16SV283	Safety Sign
7	GM379	Safety Sign 540 RPM
*	GM380	Safety Sign 1000 RPM
8	GM381	Outer Guard
9	GM382	Inner Guard
10	16SV286	Safety Sign (Not Shown)
11	GM383	Yoke, Tube & Slip Sleeve
12	GM384	Yoke
13	GM385	Joint & Shaft Halt Assembly w/Guard
14	GM386	Joint & Shaft Half Assembly
15	GM387	Joint & Tube Half Assmebly w/Guard
16	GM388	Joint & Tube Half Assmebly
*	GM389	Complete PTO 540 RPM
*	GM390	Complete PTO 1000 RPM 1-3/8"

FIGURE 20
OPTIONAL LIGHTS & FENDER

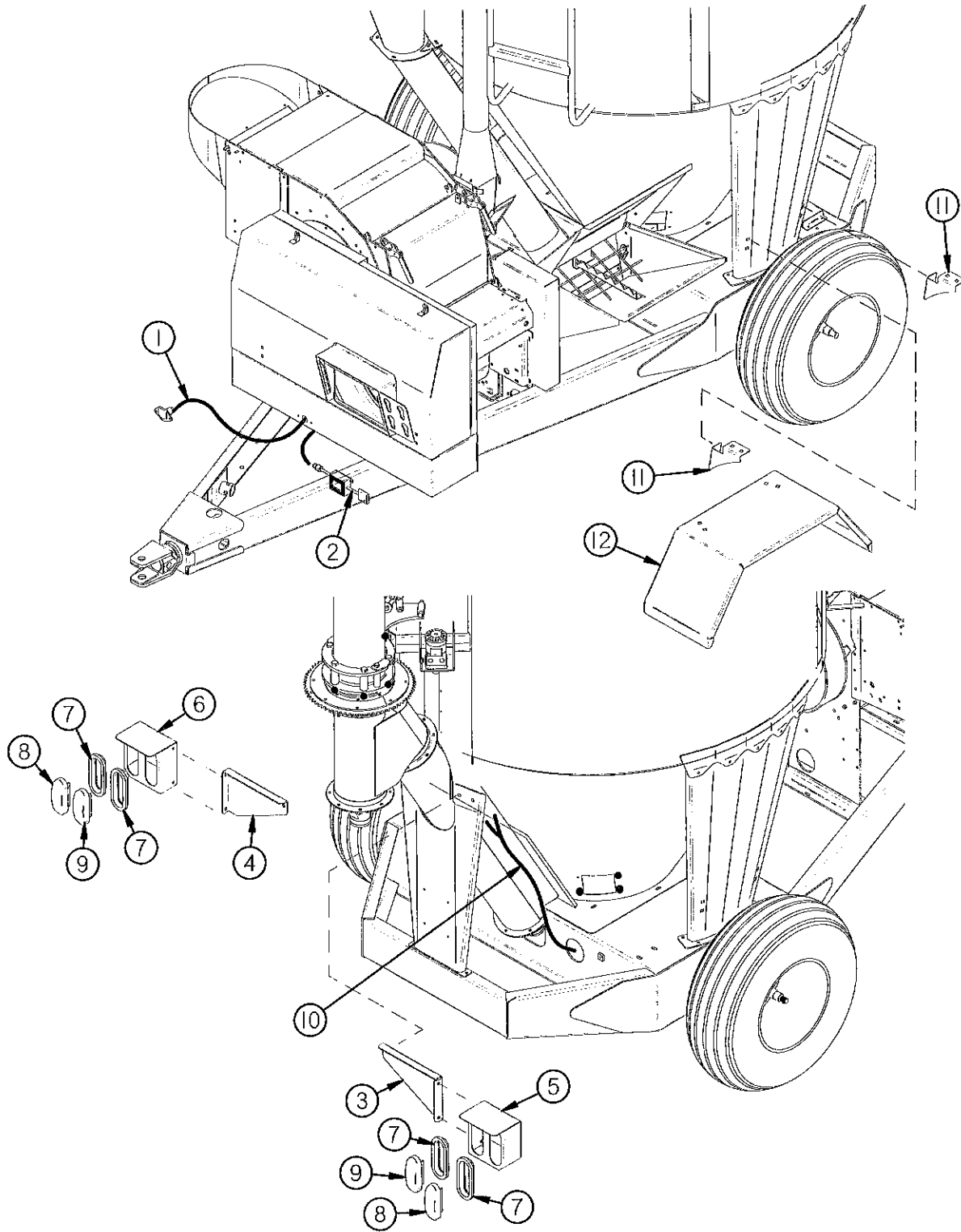


Figure 20 Optional Lights & Fenders

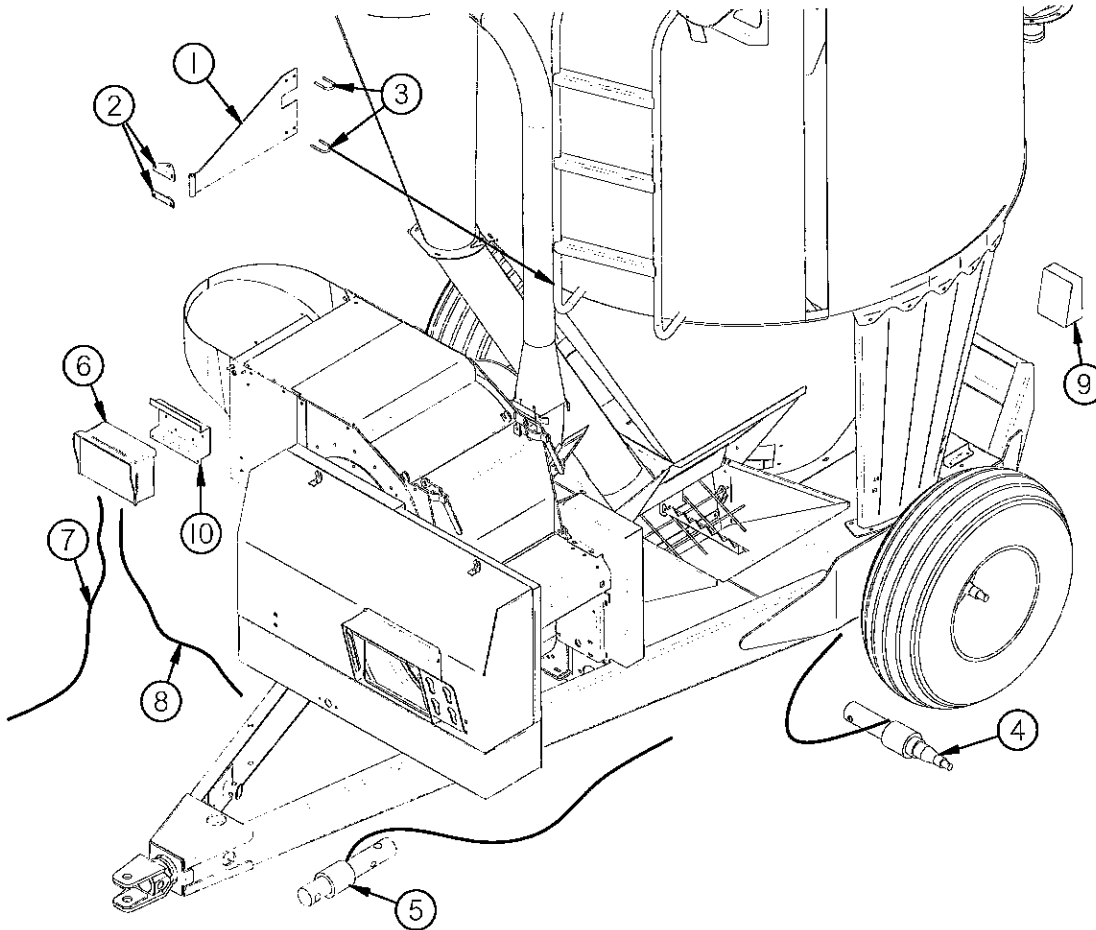
LIGHTS

ITEM #	PART #	DESC.
1	56N154	Flasher Module Loom
2	S441	Flasher Module
3	GM330	Light Bracket Right
4	GM331	Light Bracket Left
5	55N62	Light Housing Right
6	55N61	Light Housing Left
7	S308	Rubber Grommet
8	S309	Amber Hazard Light
9	S310	Red Hazard Light
10	MHD2	Tail Light Loom

FENDERS

11	GM332	Fenders Support
12	GM333	Fender (Fits Either Side)

FIGURE 21
OPTIONAL SCALE



ITEM #	PART #	DESC.
1	GM400	Control Box Arm
2	GM401	Control Box Mount
3	GM119	U Bolt 5/16" x 2"
4	GM402	Spindle Load Cell (146772)
5	GM403	Hitch Load Cell (143480)
6	GM404	Scale Display (400590)
7	GM405	Power Cord
8	GM406	Junction Box Cord
9	GM407	Junction Box (404465)
10	GM408	Scale Hanger Bracket (840459)